

May 2002

## IS Bibliographic Repository (ISBIB): A Central Repository of Research Information for the IS Community

Cecil Chua

*Nanyang Technological University, aeh.chua@auckland.ac.nz*

Lan Cao

*Georgia State University, lcao@gsu.edu*

Karlene Cousins

*Georgia State University, kcousins@gsu.edu*

Kannan Mohan

*Baruch College, kannan\_mohan@baruch.cuny.edu*

Detmar Straub

*Georgia State University, dstraub@gsu.edu*

*See next page for additional authors*

Follow this and additional works at: <https://aisel.aisnet.org/cais>

---

### Recommended Citation

Chua, Cecil; Cao, Lan; Cousins, Karlene; Mohan, Kannan; Straub, Detmar; and Vaishnavi, Vijay (2002) "IS Bibliographic Repository (ISBIB): A Central Repository of Research Information for the IS Community," *Communications of the Association for Information Systems*: Vol. 8, Article 27.

DOI: 10.17705/1CAIS.00827

Available at: <https://aisel.aisnet.org/cais/vol8/iss1/27>

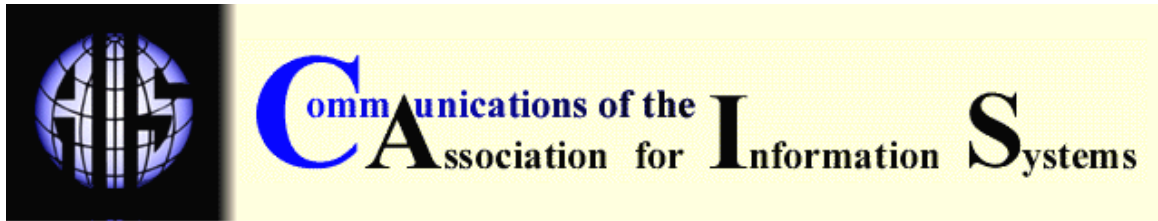
This material is brought to you by the AIS Journals at AIS Electronic Library (AISeL). It has been accepted for inclusion in Communications of the Association for Information Systems by an authorized administrator of AIS Electronic Library (AISeL). For more information, please contact [elibrary@aisnet.org](mailto:elibrary@aisnet.org).

---

# IS Bibliographic Repository (ISBIB): A Central Repository of Research Information for the IS Community

## **Authors**

Cecil Chua, Lan Cao, Karlene Cousins, Kannan Mohan, Detmar Straub, and Vijay Vaishnavi



## IS BIBLIOGRAPHIC REPOSITORY (ISBIB): A CENTRAL REPOSITORY OF RESEARCH INFORMATION FOR THE IS COMMUNITY

Cecil Chua

Lan Cao

Karlene Cousins

Kannan Mohan

Detmar Straub

Vijay Vaishnavi

*Computer Information Systems Department*

*Georgia State University*

[cchua@cis.gsu.edu](mailto:cchua@cis.gsu.edu)

### ABSTRACT

The IS Bibliographic Repository (ISBIB), a central repository of Information Systems citations and author information, is a shared resource for research and researcher assessment that can support multiple streams of research. The goal of the repository is to capture research citations and other valuable information from all sub-cultures and disciplines within the international IS community, thereby providing a balanced perspective on the state of art in IS research. This repository should lead to a better understanding on the scope and objectives of IS research in general.

The repository also aims to be an unbiased data source for bibliometric research, and studies on IS research methods and processes. It currently holds systematic information about 92 journals. In the spirit of community development, the repository is available to the entire IS community, free of charge. This article describes the current state of the repository and invites readers to use it both for their own research and for bibliometric analysis. Because the repository is intended to be a reflection of the global IS community, the authors, who are also its maintainers, encourage IS researchers and journal editors to provide bibliographic information to extend the repository's usefulness.

**KEYWORDS:** bibliometrics, IS research, gathering bibliographic data, IS research productivity, citation analysis, IS communities

### I. INTRODUCTION

The Information Systems (IS) research community was characterized as a fragmented adhocracy by Banville and Landry [1989]. Researchers in the discipline can be distinguished not only by their geographic locale [Avgerou et al., 1999] and institutional characteristics [Lending and Wetherbe, 1992], but also by their personal preferences for specific methodologies, topics, and reference disciplines [Culnan, 1986, Culnan, 1987, Teng and Galletta, 1991].

Fragmentation creates at least two abiding problems for the profession:

- Fewer opportunities for diverse IS research groups to appreciate knowledge generated by each other [Eom et al., 1993].
- Difficulty in evaluating the state and progress of IS research objectively [Athey and Plotnicki, 2000].

To overcome these problems, researchers at Georgia State University (GSU) developed the IS Bibliographic Repository (ISBIB), a central repository of information systems bibliographic information open and available free of charge to all IS researchers. The repository is intended to serve community building by capturing the diversity of research perspectives in the field. Besides serving as an aid in literature reviews, the repository is intended to assist in bibliometric analysis, i.e., the quantitative analysis of bibliographic information, co-citation analysis, and studies on research productivity [Athey and Plotnicki, 2000, Bradbard and Niebuhr, 1987, Ellis et al., 1999, Im et al., 1998, Jackson and Nath, 1989, Lending and Wetherbe, 1992, Remus, 1991, Shim and English, 1987, Shim et al., 1991, Trieschmann et al., 2000, Trower, 1995, Van Over and Nelson, 1986, Vogel and Wetherbe, 1984]. The frequent publication of such research in scholarly IS journals is testimony of its value to the IS community.

The repository is also intended to serve as a living document to track the evolution of IS as a research discipline. As the repository captures the emergence of new journals, methodologies, and topics in the IS literature, future researchers can examine the repository to understand cultural and other factors that influence how the discipline grows. Such an understanding is especially important to ward off criticism from outside the IS community [Phelan, 2000]. In essence, we should be able to defend our own research perspectives better through understanding who we are.

The essential infrastructure of the repository, including architecture development, initial data capture, and system development is complete. The repository itself can be found at <http://readable.eci.gsu.edu:8080/examples/servlet/isbib>. Researchers are invited to test the repository and provide feedback so that the tool can be enhanced to meet the research needs of the entire community.

The remainder of this paper is organized as follows. In Section II, we motivate the need for a repository of IS bibliographic information through a review of the present state of the IS discipline and existing repositories. Section III presents the evolution of ISBIB and highlights some of its notable features. Section IV shows how the repository alleviates many of the problems identified. Section V presents work that is still outstanding and suggests how various stakeholders in the IS community can participate.

## II. STATE OF THE IS DISCIPLINE

### DIVERSITY IN IS RESEARCH

Not only is research in the information systems discipline characterized as fragmented and diverse, it is also accused of suffering from an identity crisis [Banville and Landry, 1989, Benbasat and Weber, 1996, Khazanchi and Munkvold, 2000, Robey, 1996]. This fragmentation in the discipline occurs at multiple levels:

1. regional,
2. institutional and
3. personal.

#### Regional

IS academics adopt distinct attitudes towards research across countries and geographical regions. For example, European IS researchers lean toward interpretivist work, while North American IS researchers tend to prefer positivist research [Avgerou et al., 1999, Benbasat and Weber, 1996, Evaristo et al., 1992, Straub et al., 1994]. Relevance is of greater interest to Europeans while rigor resonates with the North American research tradition [Benbasat and Weber, 1996]. As a result of these distinguishing characteristics, European researchers

target different premier quality journals than North Americans [Avgerou et al., 1999, Mylonopoulos and Theoharakis, 2001].

### **Institutional**

This divergence of attitudes towards research, however, is not explained solely by geographical factors. Institutions within the same country or region often adopt separate standards for research evaluation. Institutions weight the importance of knowledge creation and knowledge dissemination differently [Trieschmann et al., 2000]. Institutions that regard knowledge creation highly also disagree on the relative merits of various knowledge contribution outlets (e.g., compare [Avgerou et al., 1999, Bradbard and Niebuhr, 1987, Clarke, 1995, Dutch Royal Society, 1996, GSU CIS Department, 1996, Hardgrave and Walstrom, 1997, Houston, Undated, Robey, 1995, Shim, 2001, Shim and English, 1987]).

Each IS institution favors particular research methodologies. Teng and Galletta [1991] discovered, for example, that most IS academic institutions focus exclusively on at most two of the eight most popular methodologies (surveys, case studies, subjective/argumentative, lab experiments, field experiments, engineering, empirical work, and theorem proof).

### **Personal**

Besides the diversity resulting from geographic and institutional factors, IS researchers themselves exhibit professional diversity in their choice of methods. IS researchers employ at least eight distinct research methodologies (detailed above) [Teng and Galletta, 1991, Vaishnavi, 1999, Vogel and Wetherbe, 1984], draw knowledge from at least seven separate reference disciplines (organizational science, psychology, management science, economics, architecture, anthropology, and computer science) [Bakos and Kemerer, 1992, Baskerville and Myers, 2002, Benbasat and Weber, 1996, Cohen, 1999, Teng and Galletta, 1991], and conduct research in at least nine<sup>1</sup> research streams [Culnan, 1986]<sup>2</sup>. In that a universally accepted definition of IS that unambiguously distinguishes IS research from its contributing disciplines has not yet emerged, it is likely that the number of methodologies, reference disciplines, and research streams is underestimated.

This picture of fragmentation suggests two outstanding issues for IS research. First, most IS researchers are unaware of related research in other paradigms. Schmidt et al. [2001] discovered, for instance, that while software project management and IS implementation research streams both dealt with project risk, little carries over from one sub-field to the other. Second, IS research conducted by small teams tends to be biased by the team's own methodological, geographic, reference discipline, and intellectual-historical sub-cultures. Gopal and Prasad [2000] argue, for example, that existing GDSS researchers tends to over-rely on quantitative methodologies and focus excessively on technology as the primary independent variable of interest.

### **EXISTING REPOSITORIES**

None of the existing repositories, subscription-based or otherwise, focuses on the IS discipline, and thus addresses these concerns. In addition, most of these repositories only index the more established, premier journals, and do not index the smaller, emerging journals, or the highly topic specific ones. Table 1 lists some of the existing repositories, and their areas of coverage.

<sup>1</sup> These numbers were found 10 to 15 years ago. Ample evidence exists that they increased since then [Benbasat and Weber, 1996].

<sup>2</sup> The research streams in Culnan [1986] were identified through a cluster analysis of existing research. Thus, not all research streams were given names. The ones with names were Foundations/Management Theory, Systems Science, Computing Impacts/Local Government, MIS/DSS Implementation, Individual Differences, Human Factors, and Computer Conferencing. Two factors were not given names.

Table 1. Representative Existing Repositories

| Repository   | Coverage   |
|--|--|
| CARL Uncover [CARL Corporation, 2001]                          | Captures a number of prominent European journals such as the European Journal of Information Systems, but does not capture such journals as MISQ, or ISR.  |
| Collection of Computer Science Bibliographies [Achilles, 2001] | Stores computer science bibliographies contributed by volunteers. The information in this repository is collected as BibTeX files organized by topic. As a result, non-technical topics are not represented.   |
| Database and Logic Programming Bibliography (DBLP) [Ley, 2001] | Addresses research of relevance to the database community. While major technical IS journals such as most ACM and IEEE Transactions are represented, other major journals such as ISR, and MISQ are not.   |
| EBSCOHost [EBSCOHost, 2001]                                    | Commercial repository that addresses research of relevance to the business research community. Most journals in this repository are focused on behavioral and organizational issues. Most of the technical journals are not represented here.              |
| HCI Bibliographic Repository [Perlman, 2001]                   | Only captures research relevant to human-computer interaction. Example journals include the International Journal of Human-Computer Studies, the International Journal of Human-Computer Interaction, and ACM Transactions on Human Computer Interactions. |
| Felix Tan's EndNote Resources [Tan, 2001]                      | A public-domain, topic specific repository. This repository tends to be focused towards the behavioral and organizational topics.  |
| Nelson H. F. Beebe's Bibliographies [Beebe, 2001]              | A public access repository captures information on many of the premier technical journals. However, all data is presented in raw ASCII (actually BibTeX) format by journal, making it difficult to query.  |
| Proquest [Bell and Howell Inc., 2001]                          | A commercial repository whose profile is similar to EBSCOHost  |
| Publisher Digital Libraries                                    | These libraries include the ACM and IEEE Digital Libraries, Elsevier Science Direct, the Springer-Verlag Digital Library, and others. The journals represented in these libraries tend to be from a single publisher.                                      |

## ADDRESSING IS BIBLIOGRAPHIC CONCERNS

The ISBIB is proposed as a means for addressing some of the issues raised in Table 1. Specifically, the ISBIB is intended to:

- Facilitate examination of the entire range of IS literature. The repository is intended to be a resource for IS literature reviews. Specifically, it can facilitate literature reviews for:
  - (1) generic IS research,
  - (2) bibliometric IS research, and
  - (3) research on IS research.
- Improve understanding of Information Systems as a research discipline, and
- Record work that any subcommunity of the IS discipline considers to be research.

By exposing the body of our work to other IS subcommunities, the repository is designed to assist our subcommunities in understanding and appreciating one another. Knowledge sharing, in turn, will better inform discourse concerning the discipline. With greater

understanding, the IS community can better equip itself to understand and define its overall scope.

The repository also exposes IS research to other research communities. By making IS research more transparent, other research communities should be able to appreciate our work better.

These goals imply that the ultimate success of the repository hinges upon the active participation of all members of the IS community. While most of the work on the repository thus far involved a small group of doctoral students and faculty at Georgia State University, it is hoped that other members of the broader IS community will contribute, at least in updating the entries related to their own work.

### III. ISBIB EVOLUTION AND FEATURES

The IS Bibliographic Repository is an operational reality. It can be found at <http://readable.cci.gsu.edu:8080/examples/servlet/isbib>. In this section, we describe how the repository evolved, and then present some of its notable features. More technical aspects of the repository design, including the database schema, are presented in Appendix II.

#### REPOSITORY EVOLUTION

The repository began as a way to improve understanding of the methodological diversity of the information systems community within Georgia State University (GSU). The GSU CIS department is unique in two ways:

- it is one of the largest CIS departments in the United States.
- it actively encourages methodological diversity both in its doctoral program [Vaishnavi et al., 1991], and in its faculty [Robey, 1995].

To understand and appreciate the plurality of topics and methodologies of interest to the department better, one of the authors (Chua) systematically collected data from most of the journals in the GSU target journal list [Robey, 1995]. This coauthor quickly realized that the collected data could possibly be useful to others. A request was broadcast on the CIS department's internal e-mail system, and a meeting of interested parties, including faculty and doctoral students was arranged.

At the organizational meeting, it was decided that the main goal of the project would be to develop a repository of bibliographic information that would be publicly available to the IS community and not proprietary to the GSU CIS department. The phases of the project were then mapped out, as shown in Figure 1. The architecture of the repository's database was specified, and bibliographic information was obtained from several sources including

- Proquest [Bell and Howell Inc., 2001],
- EBSCOHost [EBSCOHost, 2001],
- CARL Uncover [CARL Corporation, 2001],
- the Computer Science Bibliographies [Achilles, 2001],
- Nelson Beebe's bibliographies [Beebe, 2001],
- DBLP bibliographies [Ley, 2001],
- HCI Bibliographies [Perlman, 2001],
- Journal websites, and
- Journal announcements on ISWorld.

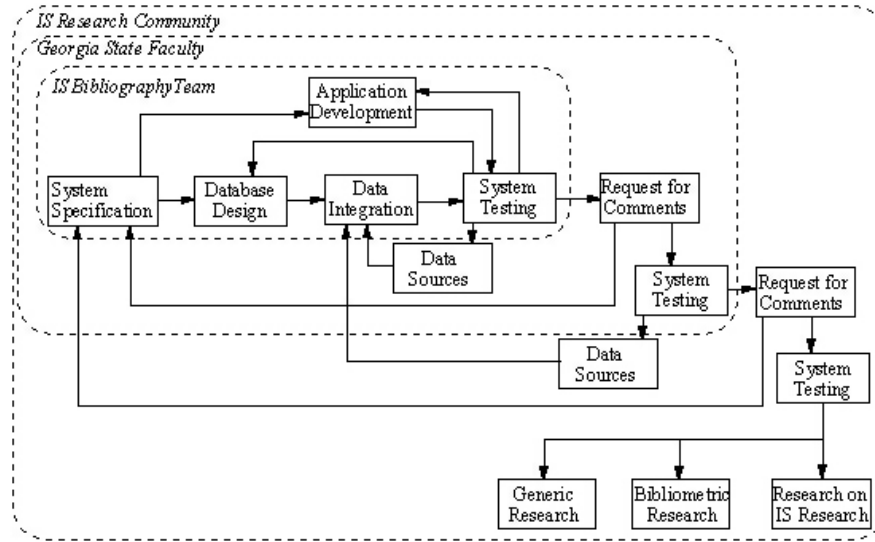


Figure 1. Project Workflow

Subsequent to the planning stage, applications were developed to leverage data within the repository, and to semi-automate the data gathering process. Because no budget was allocated to the project, tools for system development were selected from available, or public domain resources. Microsoft Access was chosen as the DBMS for the database, and Java and HTML were selected as the programming languages for web development. Tools built for other research projects were used to structure the initial prototype. When the initial data gathering, and application development processes were completed, the repository was opened for peer review within Georgia State University. Revisions obtained from the peer review process were incorporated into the repository.

At the same time, a team of doctoral students and one graduate assistant were assigned to clean the data. Data cleaning primarily centered on identifying whether authors identified in the repository as distinct were, in fact the same person. For example, Jay F. Nunamaker Jr., a highly prolific author, appeared separately as J. F. Nunamaker, J. Nunamaker, and J. Nunamaker Jr. The first round of data cleaning was completed in June 2001.

Since then, the authors worked to keep the repository current and useful. One of the authors (Chua) reviews the journals in the repository every six months to identify new journal issues to include. Whenever the authors can, they return to the repository to perform additional cleaning.

## FEATURES

The repository supports features designed to serve the needs of the Information Systems researcher, and are, therefore, unique to the ISBIB.

Figure 2 presents the home page of the repository.



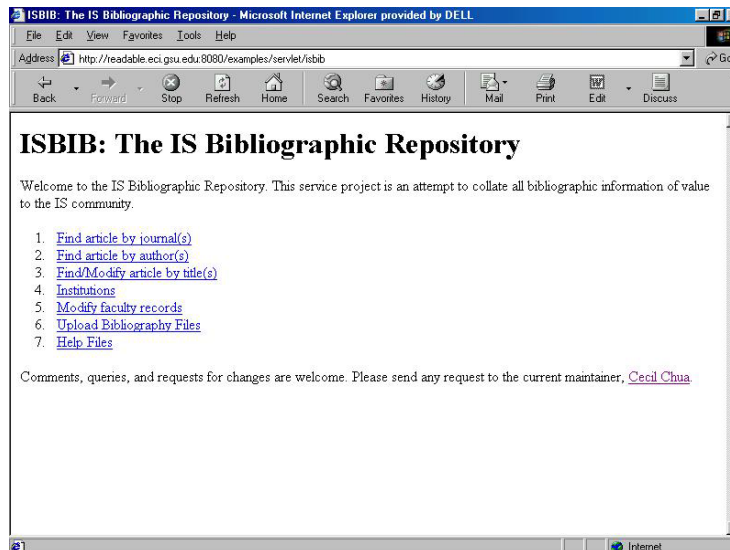


Figure 2. The IS Bibliographic Repository Home Page

The repository supports:

- 1. Complete Data** - The repository includes a diverse set of IS journals and articles not commonly included in other repositories, commercial or otherwise.
- 2. Common IS Research Activities** - The repository includes facilities to support online literature reviews. The repository can be queried by journal, author, title, abstract and keyword. In addition, if an article is available online (e.g., because it is on an author's web page, or in a digital library), the repository can be linked to the online article. Unlike most other repositories, ISBIB recognizes the varying compositional needs of IS researchers by allowing authors to export queries either to the EndNote or BibTeX bibliographic database formats.
- 3. Input from the IS Community** - ISBIB enables users to recommend corrections to existing entries, or to identify articles not captured in the repository. This capability is in keeping with the viewpoint that the repository is a community project. Thus, the community should be allowed to contribute.
- 4. Administrative Functions** - As an acknowledgement of administrator and contributor time constraints, facilities were developed to enable the administrator to add or modify existing data, both in batch mode and through an interactive screen. These import facilities are flexible enough to incorporate many import formats, making it easier for journal editors to provide such information to the administrator.

#### Database Features

Bibliographic information systematically gathered from 92 journals is already included in the repository. While the maintainers only perform two major updates a year, they also perform frequent minor updates. For example, information from new journal issue announcements on IS World are normally posted to the repository within 24 hours. As an illustration of how quickly the repository expands, by May 12, 2002 the repository stored information on 52,381 articles and 50,316 authors. Compare these figures with those of January 18, 2002 when the repository held information on 49,861 articles, 47,326 authors, and 412 institutions from 82 journals. Appendix I presents the 92 journals maintained in the ISBIB as of May 2002.

#### COMMON IS RESEARCH FACILITIES

The repository supports a standard set of bibliographic search features, including:

- queries by journal,
- queries by author, and

- queries by title, abstract, and keyword.

The querying by journal facility allows users to view bibliographic records as if they were browsing journals in a library. To perform a query, the user simply selects the journals to browse, and the date range of interest (Figure 3).

|   |           |                                   |                                   |
|---|-----------|-----------------------------------|-----------------------------------|
| <input type="checkbox"/> VLDB Journal           | 1992-2001 | <input type="text" value="1992"/> | <input type="text" value="2001"/> |
| <input type="checkbox"/> World Wide Web Journal | 1998-2001 | <input type="text" value="1998"/> | <input type="text" value="2001"/> |
| <input type="button" value="Submit Query"/>     |           |                                   |                                   |

Figure 3. Query by Journal

Queries by author enable a user to identify all recorded works by one or more authors. To perform this query, the user selects the author's name (see Figure 4). If more than one author matches the user's query, the list of matching authors is displayed for the user to select among (Figure 5). A user may select more than one author.

## Find Article by Author

**Author**

First Name:

Last Name:

Figure 4: Query by Author

**Authors**

| Select                   | Last           | First     | Change Data                 |
|--------------------------|----------------|-----------|-----------------------------|
| <input type="checkbox"/> | Grove          | Adam J.   | <a href="#">Change data</a> |
| <input type="checkbox"/> | Grove          | Edward F. | <a href="#">Change data</a> |
| <input type="checkbox"/> | Grover         | S. L.     | <a href="#">Change data</a> |
| <input type="checkbox"/> | Grover         | Varun     | <a href="#">Change data</a> |
| <input type="checkbox"/> | Grover         | Wayne D.  | <a href="#">Change data</a> |
| <input type="checkbox"/> | Groves-Philips | S         | <a href="#">Change data</a> |
| <input type="checkbox"/> | Grovez         | Adam J.   | <a href="#">Change data</a> |

Figure 5: Selecting Authors

Finally, the query by title, abstract and keyword facility provides the user with a powerful flexible search facility to identify a specific article of interest. Figure 6 presents the query by title, abstract and keyword screen.

Irrespective of the query method employed, all ISBIB bibliographic output appears in an identical format (Figure 7). This output contains many options to enable further querying. For example, the user can click on the author's name. This generates a query of all of that author's journal publications. The user can also click on the title of an article, on the journal name, or on icons presented to the right of the article. These inquiries respectively generate the full bibliographic information on the article, query the journal, or download the article from the respective digital library. In the snapshot presented in Figure 7, the author could download the

### Find Article by Title

Title:   
 Author-Last:  First:   
 Abstract:   
 Keyword:  Separate the keywords with the comma  
 Journal:   
 Year- From:  To:

Figure 6: Querying by Title, Abstract and Keyword

- [M. Elizabeth C. Hull, R. M. McKeag, Communicating Sequential Processes for Centralized and Distributed Operating System Design.](#)  
[ACM Transactions on Programming Languages and Systems 6\(2\) April 1984](#) pp. 175-191
- [Abha Moitra, Technical Correspondence: On Apt, Francez, and de Roovers "A Proof System for Communicating Sequential Processes.](#)  
[ACM Transactions on Programming Languages and Systems 5\(3\) July 1983](#) pp. 500-501



Figure 7: Results of a query

article from the ACM digital library. Figure 8 presents an example of the full bibliographic information on an article


**Title:** [Communicating Sequential Processes for Centralized and Distributed Operating System.](#)  
**Journal:** [ACM Transactions on Programming Languages and Systems,6\(2\) April 1984](#) pp. 175-191  
**Authors:** [M. Elizabeth C. Hull](#)  
[R. M. McKeag](#)  
**Abstract:** This paper demonstrates how the notion of Communicating Sequential Processes may be used in an operating system. It goes further to show how such an approach assists in the design and development of a system distributed over a network of computers. The technique uses a well-defined design methodology.  
[Computer-Communications Networks](#)  
[Concurrency](#)  
[Concurrent Programming](#)  
[Concurrent Programming Languages](#)  
[Distributed Systems](#)  
[Language Constructs](#)  
**Keywords:** [Network Operating Systems](#)  
[Operating Systems](#)  
[Pascal Plus](#)  
[Process Management](#)  
[Programming Techniques](#)  
[Scheduling](#)  
[Synchronization](#)  
**Download From:** 

Figure 8. Full Bibliographic Information on an Article

Data in the IS Bibliographic Repository can be copied to a user's personal bibliographic databases. As researchers in the discipline use distinct authoring tools, the repository supports two of the bibliographic formats most commonly used by IS Researchers: EndNote, and BibTeX. Such data can be exported by selecting the relevant articles and export function in the query results screen (Figure 9). Authors that use other tools can request the creation of additional bibliographic export filters.

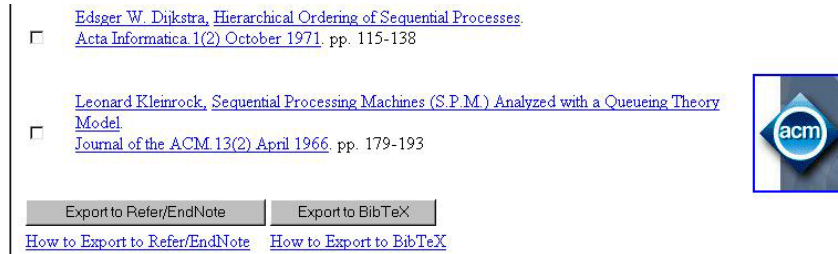


Figure 9. Export Functions in the IS Bibliographic Repository

Once the user selects an export option, the system generates a file on screen. Users should save the import file in text format, and then import it using their bibliographic database's import utility. For EndNote users, the Refer/BibIX import function should be used. BibTeX users can simply concatenate the export file with their existing database.

### INPUT FROM THE IS COMMUNITY

Inasmuch as the database contains a large number of articles and authors, it is inevitable that much of the data in the database contains errors or is missing information. For example, in many cases, bibliographic information such as page numbers is missing. As discussed previously, the same author is often referred to in multiple ways. In addition, many important reference works are not captured, either because the team could not identify a convenient way to capture the journal's bibliographic information electronically, or because the team was unfamiliar with the journal.

The repository provides a feature for users to input corrections to the repository. For example, users can change data about author affiliation, or even an author's name by selecting the "Change data" link that appears next to an author in the search by author function (Figure 10).

Please enter your e-mail address here:

**Authors**

| Select                                      | First | Last   | University         |
|---|-------|--------|--------------------|
| <input type="checkbox"/>                    | Varun | Grover | Clemson University |
| <input type="button" value="Submit Query"/> |       |        |                    |

- Central Missouri State University
- Citadel University
- City University of New York, Baruch
- Claremont Graduate School
- Clarkson University
- Clemson University**
- Cleveland State University
- College of Charleston
- College of William and Mary
- Colorado State University
- Columbia University

Figure 10: Changing Author Data

In Figure 10, for example, Professor Varun Grover would use the system to correct his institutional affiliation to Clemson University and submit the change [Click on "Submit Query"] to

the system. Users should be cautioned that for integrity and security, such corrections do not appear in the database immediately. Instead, they are added to a separate corrections table. The database administrator then approves each individual correction. Also, all changes must be identified with the e-mail address of the person requesting the change. Queries or concerns about amendments should be directed to the current administrator<sup>3</sup>.

### ADMINISTRATIVE FUNCTIONS

Features are provided to aid the administrator. Specifically, four batch entry programs were developed to import files in various formats. The two commonly used batch entry programs import bibliographic data in BibTeX, and APA formats. A customizable batch program was also developed to facilitate the entry of bibliographic information posted on IS World. A fourth batch entry program is used to import changes made by users. Before using this batch entry program, the administrator reviews the existing change requests and flags them. The administrator can change the flag to approved, not approved, or temporarily uncertain. The default for all user requests and changes is temporarily uncertain. Once the administrator calls the batch entry program, the requests are modified in the following way:

- Approved requests are added to the database.
- Requests that are not approved are deleted.
- Requests considered temporarily uncertain remain unchanged.

The repository also indirectly supports the import of EndNote libraries. However, to import such libraries, they must first be exported to BibTeX format.

Since the ISBIB accepts data in the major bibliographic formats, it is easy for editors to provide bibliographic information of new articles whenever a journal issue is published.

Finally, the system includes a data entry screen to enter bibliographic information for individual articles. This screen is used to enter, for example, information about the articles of individual authors. Figure 11 presents the screen used to enter new articles. The "Not Official" flag is used to indicate that the entered data was not collected systematically from another source (e.g., journal website). This flag helps the administrator identify and delete duplicate articles.

Figure 11. Entry Of New Articles

### IV. ISBIB BENEFITS

The ISBIB benefits the IS research community in two ways:

<sup>3</sup> At the time of publication, the administrator is this paper's first author.

- It facilitates three types of IS research: (1) research about information systems, (2) bibliometric research, and (3) studies about IS research.
- It increases shared understanding within the IS community by bringing research from the various subcommunities into a central repository for viewing and use.

The ISBIB not only helps subcommunities within the IS research community to comprehend the interests and work of the other subcommunities, but the improved understanding also strengthens the community when it is confronted with external threats.

## RESEARCH FACILITATION

### Research About Information Systems

ISBIB provides all interested IS researchers with a central repository of bibliographic information. Currently, IS researchers are limited by having access only to such topic-specific bibliographic repositories as the *ISWorld EndNote Library Resources* [Tan, 2001], the *Human-Computer Interaction Bibliography* [Perlman, 2001], *Proquest* [Bell and Howell Inc., 2001], EBSCOHost [EBSCOHost, 2001], and DBLP [Ley, 2001]. As valuable as these repositories are, they are restricted to the topics they support. By no means do they cover all areas being explored by IS researchers.

ISBIB already captures a more representative picture of IS research than other existing repositories.

### Bibliometric Research

As a repository of IS bibliographic information, ISBIB provides a large, unbiased source of bibliometric data. Existing bibliometric information is obtained either by consulting the bibliographic repository of a reference discipline [Culnan, 1986, Culnan, 1987, Ellis et al., 1999], or by tracing citation information in articles in a few, well recognized journals [Athey and Plotnicki, 2000, Bradbard and Niebuhr, 1987, Im et al., 1998, Jackson and Nath, 1989, Lending and Wetherbe, 1992, Remus, 1991, Shim and English, 1987, Shim et al., 1991, Trieschmann et al., 2000, Trower, 1995, Vogel and Wetherbe, 1984]. The first approach produces results biased towards research framed in the reference discipline. The second approach produces results biased towards the geographical orientation, methodologies, and topics that the widely recognized journals support.

### Studies About IS Research

The accuracy of research on IS research, especially on journal quality and researcher productivity is much debated [Athey and Plotnicki, 2000]. IS research institutions adopt different criteria to measure journal quality and research productivity. Often, these studies are biased against research framed in reference disciplines that encourage specialization. For example, several excellent articles in this area, such as Trieschmann et al. [2000] and Trower [1995] did not consider technical journal publications of IS researchers while others such as Athey and Plotnicki [2000] considered only a limited subset of top-tier technical journals.

ISBIB provides features to overcome this limitation:

- the repository offers a large set of journals for analysis.
- when available, the quality of journals recognized by institutions is identified within the repository.

At present, we believe only Georgia State University lists its estimate of journal quality. However, the capability to do so is provided for all institutions listed in the database. Once a representative sample of IS research institutions provide their list, the community can use the data (in conjunction with other sources) to evaluate journal quality better. ISBIB complements existing sources of journal quality information (e.g. Carol Saunder's Journal Information page [Saunders, 2001]) by providing information about ratings of journal quality by the individual institutions. Existing sources primarily provide aggregated information of journal quality derived from surveys. It is difficult to determine the universality of a journal's perceived quality level from these sources.

## SHARED UNDERSTANDING

ISBIB includes bibliographic information about articles formulated from disparate reference disciplines using different methodologies, about distinct topics, from separate geographic locales. As a result, the ISBIB provides one avenue to help IS researchers appreciate the discipline's plurality.

As the repository increases in size and becomes ever more representative, it will also facilitate an empirical definition of the IS discipline. Communities are self-defined and in the case of IS, the most operational definition to date is the list of researchers who consider themselves to be part of the community by entering or correcting information on the ISWorld Faculty Directory service provided by the MIS Research Center at the University of Minnesota [<http://webfoot.csom.umn.edu/isworld/facdir/default.htm>]. The repository performs a complementary role by allowing the community to self-define IS research. Because all IS researchers can submit their articles to the repository, the scope of IS research is not constrained by the vision of a select group of individuals. On the other hand, the relevance of each journal to IS can be assessed independently by determining the frequency that IS academics publish in their pages. Also, an IS researcher must suggest journals for inclusion into the repository. Journals without advocates by definition would not be IS journals.

Such an empirical definition offered by the widespread use of ISBIB is important for administrative reasons. It should help protect IS academic departments from being absorbed by academic departments of related disciplines, and it should help tenure-track candidates justify the importance of their research. While IS now stands in a reasonably healthy position in most universities, there was a time when the relevance of IS as a research discipline was routinely questioned [Keen, 1980]. If we do not define our own discipline, others will define it for us [Phelan, 2000].

## V. ISSUES OUTSTANDING

One final concern about ISBIB is its long-term viability. The ISBIB provides a clear benefit to all users. It provides a central resource for literature reviews, and an easily available database for bibliometric research. However, the benefits of the repository are averaged over thousands of IS researchers, while the costs of maintaining it are borne by a handful of volunteers. Currently, the maintenance level of the ISBIB is in line with other existing repositories. To our knowledge, no repository captures the latest articles in most journals, and frequently, entries can remain unchanged for a year. The ISBIB undergoes a major update twice a year.

To some degree, the costs of maintaining the repository are mitigated by the academic research culture, which expects its members to contribute services. Other existing academic bibliographic repositories such as the DBLP [Ley, 2001] and the HCI bibliographies [Perlman, 2001] are maintained by volunteers, just like the ISBIB. Similarly, many volunteers support various aspects of the IS community. For example, David Naumann supports the MISC-ISWorld Faculty Directory<sup>4</sup> (<http://ids.csom.imn.edu/isworld/facdir/default.htm>), a list of IS faculty. Similarly, Felix Tan supports the IS EndNote Resource page [Tan, 2001].

However, service does not completely compensate for the costs of maintenance. As a result, major updates to ISBIB only occur twice a year. Thus, the most recent issues of journals are often not available. In some cases, where the maintainers do not have access to recent copies of journals, the entries are not updated at all.

Furthermore, while the maintainers would like to extend the repository to capture conference proceedings, books, book sections, and dissertations, the additional cost of development and maintenance is sufficiently prohibitive that such work has not commenced.

We believe the best approach to ensuring the long-term viability of the repository is to encourage more volunteers to work on the project. Specifically, AIS, journals, universities, and authors are invited to contribute their knowledge and expertise to this research.

<sup>4</sup> The IS faculty directory was originally created at the University of Minnesota [DeGross et al., 1989]

## AIS

Discussions were underway in mid-2002 to put the repository under AIS sponsorship. By placing the ISBIB under the umbrella of a representative institution, we ensure that it accurately reflects the perspectives and beliefs of the entire IS community.

## JOURNALS

As the repository grows, it will not be possible for a small volunteer team of graduate students and faculty to keep the repository up to date. Editors of IS journals could take steps to ensure that information is accurate and up-to-date by providing bibliographic information on current issues of their journals. This resource especially requires bibliographic information from the editors of journals not found in the repository. The current list of journals is mostly reflective of the North American community, and, thus, the assistance of the international IS community in supplying missing information is requested.

## INSTITUTIONS AND AUTHORS

The repository currently contains just under 50,000 articles and over 47,000 authors. It is not possible to search for contact information on all authors manually or verify that the repository is accurate. Institutions such as universities and research laboratories are encouraged to contribute their target journal lists, and information on their researchers, including home page and contact information. Target journal lists are classifications of IS journals by type and quality [Swanson et al., 1998]. They serve the purposes of tenure and promotion and of measures of IS researcher productivity. A typical target journal list, such as that used by Georgia State University (<http://www.cis.gsu.edu/~dstraub/Research/TargetJournalList/Target%20Journals.htm>), classifies journals by quality. "Premier" journals on the GSU list are equivalent to "A" journals, etc. Another option is to categorize by type, for example, scholarly as opposed to practitioner journals.

Authors are invited to visit the ISBIB website to identify errors and suggest corrections.

## VI. CONCLUSION

The Information Systems Bibliographic Repository, a central, comprehensive repository of bibliographic information on IS research, was initiated as a resource for the entire IS community. This repository was developed to facilitate research in Information Systems and to help define the discipline empirically. Preliminary data gathering and application development is complete. Almost 50,000 articles currently appear in the repository. Remaining work includes additional data gathering, data cleaning, extending the repository to incorporate other forms of research such as conference proceedings, books, and book chapters, and mining the repository for insights on IS research directions and trends.

Members of the IS research community are encouraged to test and use the repository. The implementation team also actively encourages feedback from the community to improve the content and structure of the repository. In this way, a shared understanding of the Information Systems landscape can be fostered, one that crosses the methodological disciplines, geographic backgrounds, intellectual histories, and reference disciplines that currently fragment the IS community.

Editor's Note: This article was fully refereed. It was received on March 4, 2002. It was with the authors for three weeks for two revisions. It was published on May 22, 2002.

## REFERENCES

- Achilles, A.-C. (2001) "The Collection of Computer Science Bibliographies," <http://iinwww.ira.uka.de/bibliography/index.html>(Jan.20,2002).
- Athey, S. and J. Plotnicki (2000) "An Evaluation of Research Productivity in Academic IT," *Communications of the AIS* (3) 7, pp. 1-20.
- Avgerou, C., J. Siemer, and N. Bjorn-Andersen (1999) "The Academic Field of Information Systems in Europe," *European Journal of Information Systems* (8) 2, pp. 136-153.



- Bakos, J. Y. and C. F. Kemerer (1992) "Recent Applications of Economic Theory in Information Technology Research," *Decision Support Systems* (8) 5, pp. 365-386.
- Banville, C. and M. Landry (1989) "Can the Field of MIS be Disciplined?," *Communications of the ACM* (32) 1, pp. 48-60.
- Baskerville, R. L. and M. D. Myers (2002) "Information Systems as a Reference Discipline," *MIS Quarterly* (26) 1, pp. 1-14.
- Beebe, N. H. (2001) "Nelson H. F. Beebe's Bibliographies Page," <http://www.math.utah.edu/~beebe/bibliographies.html> (Jan. 20, 2001).
- Bell and Howell Inc. (2001) "Proquest Bibliographic Database," <http://www.proquest.com/> (Jan. 20, 2001).
- Benbasat, I. and R. Weber (1996) "Rethinking "Diversity" in Information Systems Research," *Information Systems Research* (7) 4, pp. 369-399.
- Bradbard, D. A. and R. E. Niebuhr. (1987) "A Study of Institutional Publications in Selected MIS Journals: 1979-1985." *Southeast Decision Sciences Institute, 1987*.
- CARL Corporation (2001) "Carl Uncover," <http://www.carl.org/> (Jan. 20, 2001).
- Clarke, R. (1995) "Information Systems Publications: A Classification," Australian National University, <http://www.anu.edu.au/people/Roger.Clarke/ISRes/INFSRefs.html>(Jan.20, 2001).
- Cohen, E. (1999) "Reconceptualizing Information Systems as a Field of the Transdiscipline Informing Science: From Ugly Duckling to Swan," *Journal of Computing and Information Technology* (7) 3, pp. 213-219.
- Culnan, M. J. (1986) "The Intellectual Development of Management Information Systems, 1972-1982: A Co-Citation Analysis," *Management Science* (32) 2, pp. 156-172.
- Culnan, M. J. (1987) "Mapping the Intellectual Structure of MIS, 1980-1985: A Co-Citation Analysis," *MIS Quarterly* (11) 3, pp. 341-353.
- DeGross, J. I., G. B. Davis, and S. Kuehl (eds.) (1989) *Directory of Management Information Systems Faculty in the United States and Canada*, New York, NY: McGraw-Hill.
- Dutch Royal Society. (1996) *Ranking of Journals*. Dutch Royal Society.
- EBSCOHost (2001) "Academic Search Premier," <http://www.ebscohost.com/> (Jan. 20, 2001).
- Ellis, D., D. Allen, and T. Wilson (1999) "Information Science and Information Systems: Conjoint Subjects Disjunct Disciplines," *Journal of the American Society for Information Science* (50) 12, pp. 1095-1107.
- Eom, S. B., S. M. Lee, and J. K. Kim (1993) "The Intellectual Structure of Decision Support Systems (1971-1989)," *Decision Support Systems* (10) 1, pp. 19-35.
- Evaristo, J. R., S. Ang, and D. W. Straub (1992) "Criteria for High-Quality Information Systems Research: A Comparison of the Views of North American and International Scholars," *International Information Systems* (1) 4, pp. 99-105.
- Gopal, A. and P. Prasad (2000) "Understanding GDSS In Symbolic Context: Shifting the Focus From Technology to Interaction," *MIS Quarterly* (24) 3, pp. 509-546.
- GSU CIS Department. (1996) *GSU Target Journals*. Georgia State University.
- Hardgrave, B. C. and K. A. Walstrom (1997) "Forums for MIS Scholars," *Communications of the ACM* (40) 11, pp. 119-124.
- Houston. (Undated) *MIS Journal Ranking*. University of Houston.
- Im, K. S., K. Y. Kim, and J. S. Kim (1998) "An Assessment of Individual and Institutional Research Productivity in MIS," *Decision Line* (29) 1, pp. 8-12.
- Jackson, W. M. and R. Nath (1989) "Publication Patterns of MIS Researchers," *Interfaces* (11) 2, pp. 15-20.
- Keen, P. G. W. (1980) "MIS Research: Reference Disciplines and a Cumulative Tradition." *First International Conference on Information Systems, Philadelphia, PA, 1980*, pp. 9-18.
- Khazanchi, D. and B. E. Munkvold (2000) "Is Information Systems a Science? An Inquiry into the Nature of the Information Systems Discipline," *The Database for Advances in Information Systems* (31) 3, pp. 24-42.
- Lending, D. and J. C. Wetherbe (1992) "Update on MIS Research: A Profile of Leading Journals and U.S. Universities," *Data Base* (23) 2, pp. 5-11.

- Ley, M. (2001) "Database and Logic Programming Computer Science Bibliography," <http://www.informatik.uni-trier.de/~ley/db/index.html> (Jan. 20, 2001).
- Mylonopoulos, N. A. and V. Theoharakis (2001) "Global Perceptions of IS Journals: Where is the Best IS Research Published?," *Communications of the ACM* (44) 9, pp. 29-33.
- Perlman, G. (2001) "HCI Bibliography : Human-Computer Interaction Resources," <http://www.hcibib.org/> (January 20, 2001).
- Phelan, T. J. (2000) "Evaluation of Scientific Productivity," *The Scientist* (14) 19.
- Remus, W. (1991) "Research Published in the Top Four MIS Journals: 1986-1990," *MIS Interrupt* (50) 1, pp. 2-3.
- Robey, D. (1995) *Target Journals*. Georgia State University.
- Robey, D. (1996) "Research Commentary: Diversity in Information Systems Research: Threat, Promise, and Responsibility," *Information Systems Research* (7) 4, pp. 400-407.
- Saunders, C. (2001) "Journal Information," <http://catt.bus.okstate.edu/isworld/journal2.htm> (Oct. 11, 2001).
- Schmidt, R., K. Lyytinen, M. Keil, and P. Cule (2001) "Identifying Software Project Risks: An International Delphi Study," *Journal of Management Information Systems* (17) 4, pp. 5-36.
- Shim, J. P. (2001) "Information Systems Journal Ranking ("A", "B", "C" Journals)," Mississippi State University, <http://www.cbi.msstate.edu/faculty/shim/ar.html> (Jan. 20, 2001).
- Shim, J. P. and J. B. English. (1987) "Productivity Ratings of Institutions Based on Publications In Five "Top" Rated MIS Journals: 1980-1986." *Annual Meeting of the Decision Sciences Institute, Boston, Massachusetts, 1987*, pp. 202-209.
- Shim, J. P., J. B. English, and J. Yoon (1991) "An Examination of Articles in the Eight Leading Management Information Systems Journals: 1980-1988," *Socio-Economic Planning Sciences* (25) 3, pp. 211-219.
- Straub, D., S. Ang, and R. Evaristo (1994) "Normative Standards for MIS Research," *Data Base* (25) 1, pp. 21-34.
- Swanson, E. B., D. Adams, D. Robey, and K. A. Walstrom. (1998) "Target Journals for Information Systems Research: Current Practices and Controversies." *Proceedings of the International Conference on Information Systems, Helsinki, Finland, 1998*, pp. 420-424.
- Tan, F. B. (2001) "Endnote Resources," <http://www.business.auckland.ac.nz/departments/msis/personal/F.Tan/ISWorld/endnote.htm> (Jan. 20, 2001).
- Teng, J. T. C. and D. F. Galletta (1991) "MIS Research Directions: A Survey of Researchers' Views," *Data Base* (22) 4, pp. 53-62.
- Trieschmann, J. S., A. R. Dennis, G. B. Northcraft, and A. W. Niemi Jr. (2000) "Serving Multiple Constituencies in Business Schools: M.B.A. Program Versus Research Performance," *Academy of Management Journal* (43) 6, pp. 1130-1141.
- Trower, J. K. (1995) "Publications by Researchers and Institutions in Two Top IS Journals: 1990-1994." *Proceedings of the First Americas Conference on Information Systems, Pittsburgh, PA, 1995*, pp. 23-25.
- Vaishnavi, V. (1999) "Teaching and Promoting Improvement Research Methods in Information Systems and Technology." *Workshop on Information Technologies and Systems, Charlotte, North Carolina, 1999*, pp. 240.
- Vaishnavi, V. K., S. Yoon, and G. Buchanan. (1991) "Computer Information Systems Research at Georgia State University: A Balanced Approach." *The 24th Hawaiian International Conference on Systems Sciences, Hawaii, 1991*, pp. 500-509.
- Van Over, L. D. and R. R. Nelson. (1986) "Research In Management Information Systems, 1980-1985: A Profile of Leading Journals, Articles, and Authors." *18th Annual Meeting of the Decision Sciences Institute, Honolulu, Hawaii, 1986*.
- Vogel, D. R. and J. C. Wetherbe (1984) "MIS Research: A Profile of Leading Journals and Universities," *Data Base* (16) 1, pp. 3-14.

**APPENDIX I. JOURNALS REPRESENTED IN THE ISBIB (MAY 2002)**

**EDITOR'S NOTE:** This table is updated in the Letter to the Editor at the end of this article, dated January 2003.

| Serial Number | Title   | Years     | Issues          |
|---------------|---|-----------|-----------------|
| 1             | Annals of Cases on Information Technology   | 1999-2002 | 1-4             |
| 2             | Accounting, Management, and Information Technologies/Information and Organization                       | 1991-2002 | 1:1-12:2        |
| 3             | ACM Computing Surveys   | 1969-2002 | 1:1-34:1        |
| 4             | ACM Letters on Programming Languages and Systems/ ACM Transactions on Programming Languages and Systems | 1979-2001 | 1:1-23:5        |
| 5             | ACM Transactions on Computational Logic   | 2000-2002 | 1:1-3:2         |
| 6             | ACM Transactions on Computer Systems  | 1983-2002 | 1:1-20:1        |
| 7             | ACM Transactions on Computer-Human Interaction  | 1994-2002 | 1:1-9:1         |
| 8             | ACM Transactions on Database Systems  | 1976-2001 | 1:1-26:4        |
| 9             | ACM Transactions on Design Automation of Electronic Systems   | 1996-2002 | 1:1-7:1         |
| 10            | ACM Transactions on Graphics  | 1982-2002 | 1:1-21:1        |
| 11            | ACM Transactions on Information and System Security   | 1998-2002 | 1:1-5:2         |
| 12            | ACM Transactions on Information Systems/ ACM Transactions on Office Information Systems                 | 1983-2002 | 1:1-20:1        |
| 13            | ACM Transactions on Internet Technology   | 2001-2002 | 1:1-2:1         |
| 14            | ACM Transactions on Mathematical Software   | 1975-2001 | 1:1-27:4        |
| 15            | ACM Transactions on Modeling and Computer Simulation  | 1991-2001 | 1:1-11:3        |
| 16            | ACM Transactions on Software Engineering and Methodology  | 1992-2002 | 1:1-11:2        |
| 17            | Acta Informatica  | 1971-2002 | 1:1-38:4        |
| 18            | AI Magazine   | 1980-2000 | 1:1-21:4        |
| 19            | Artificial Intelligence   | 1983-2002 | 21:1-136:1      |
| 20            | BIT   | 1980-1993 | 20:1-33:4       |
| 21            | Communications of the ACM   | 1971-2002 | 14:1-45:2       |
| 22            | Communications of the Association for Information Systems   | 1999-2002 | 1:1-8:24        |
| 23            | Data and Knowledge Engineering  | 1986-2002 | 1:1-40:2        |
| 24            | Decision Support Systems  | 1994-2002 | 12:2-33:3       |
| 25            | E-Services Journal  | 2001-2001 | 1:1-1:2         |
| 26            | Electronic Journal on Information Systems in Developing Countries                                       | 2000-2002 | 1:1-9:1         |
| 27            | Electronic Markets  | 1991-2002 | 1:2-12:2        |
| 28            | European Journal of Information Systems   | 1995-2002 | 4:1-11:1        |
| 29            | Group Decision and Negotiation  | 1995-2001 | 4:1-10:6        |
| 30            | IEEE Computer   | 1974-2002 | 7:1-35:1        |
| 31            | IEEE Computer Graphics and Applications   | 1981-2002 | 1:1-22:1        |
| 32            | IEEE Computer Science and Engineering/IEEE Computing in Science and Engineering                         | 1994-2002 | 1:1-5:4/1:1-4:3 |
| 33            | IEEE Concurrency  | 1997-2000 | 5:1-8:3         |
| 34            | IEEE Internet Computing   | 1997-2002 | 1:1-6:2         |
| 35            | IEEE Micro  | 1981-2002 | 1:1-22:2        |

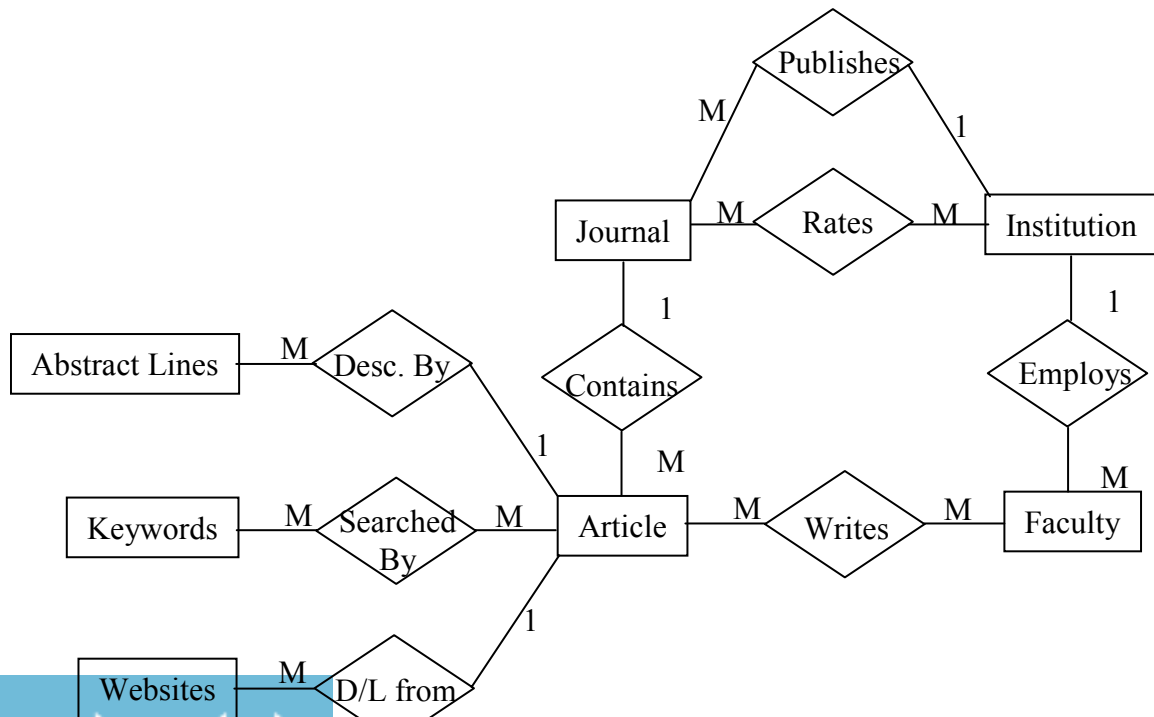
| Serial Number | Title  | Years     | Issues    |
|---------------|--|-----------|-----------|
| 36            | IEEE Parallel and Distributed Technology   | 1993-1996 | 1:1-4:4   |
| 37            | IEEE Software  | 1984-2002 | 1:1-19:2  |
| 38            | IEEE Transactions on Computers   | 1975-2001 | 24:1-50:9 |
| 39            | IEEE Transactions on Engineering Management  | 1986-2002 | 33:1-49:1 |
| 40            | IEEE Transactions on Evolutionary Computation  | 1997-2000 | 1:1-4:3   |
| 41            | IEEE Transactions on Fuzzy Systems   | 1998-2000 | 6:1-8:5   |
| 42            | IEEE Transactions on Knowledge and Data Engineering  | 1989-2001 | 1:1-13:6  |
| 43            | IEEE Transactions on Neural Networks   | 1990-2000 | 1:1-11:6  |
| 44            | IEEE transactions on parallel and distributed systems  | 1990-2001 | 1:1-12:9  |
| 45            | IEEE Transactions on Software Engineering  | 1975-2001 | 1:1-27:9  |
| 46            | IEEE Transactions on Visualization and Computer Graphics   | 1995-2001 | 1:1-7:4   |
| 47            | IEEE/ACM Transactions on Networking  | 1993-2001 | 1:1-9:6   |
| 48            | Information and Management   | 1995-2002 | 28:1-39:6 |
| 49            | Information Management   | 2000-2000 | 13:3-13:4 |
| 50            | Information Resources Management Journal   | 2001-2002 | 14:1-15:1 |
| 51            | Information Society  | 1981-2002 | 1:1-18:2  |
| 52            | Information Systems  | 1975-2002 | 1:1-27:3  |
| 53            | Information Systems Frontiers  | 1999-2001 | 1:1-3:4   |
| 54            | Information Systems Journal  | 1995-2002 | 5:1-12:2  |
| 55            | Information Systems Research   | 1990-2002 | 1:1-13:1  |
| 56            | Information Technology and Management  | 2000-2001 | 1:1-2:3   |
| 57            | Information Technology and People  | 1993-2001 | 6:2-14:1  |
| 58            | Informing Science  | 1997-2002 | 1:1-5:2   |
| 59            | International Journal of Electronic Commerce   | 1996-2001 | 1:1-6:1   |
| 60            | International Journal of Human Computer Interaction  | 1989-2001 | 1:1-13:4  |
| 61            | International Journal of Man-Machine Studies/<br>International Journal of Human Computer Studies | 1982-2002 | 16:1-56:2 |
| 62            | Journal of Algorithms  | 1980-2001 | 1:1-41:1  |
| 63            | Journal of Computer and System Science   | 1990-2001 | 40:1-63:2 |
| 64            | Journal of Database Management   | 2000-2002 | 11:4-13:2 |
| 65            | Journal of Educational Resources in Computing  | 2001-2001 | 1:1-1:2   |
| 66            | Journal of Electronic Commerce Research  | 2000-2002 | 1:1-3:1   |
| 67            | Journal of End User Computing  | 2000-2002 | 12:2-14:2 |
| 68            | Journal of Experimental Algorithmics   | 1996-1999 | 1:1-4:1   |
| 69            | Journal of Global Information Management   | 1993-2002 | 1:2-10:2  |
| 70            | Journal of Global Information Technology and Management  | 1998-2002 | 1:1-5:2   |
| 71            | Journal of Information Technology  | 1993-2000 | 8:1-15:4  |
| 72            | Journal of Information Technology Cases  | 1999-2001 | 1:1-3:4   |
| 73            | Journal of Information Technology Education  | 2002-2002 | 1:1-1:3   |
| 74            | Journal of Information Technology Theory and Application   | 1999-2001 | 1:1-3:5   |
| 75            | Journal of Information Warfare   | 2001-2001 | 1:1-1:2   |
| 76            | Journal of Management Information Systems  | 1984-2002 | 1:1-18:4  |
| 77            | Journal of Strategic Information Systems   | 1995-2002 | 4:1-11:1  |

| Serial Number | Title   | Years     | Issues    |
|---------------|---|-----------|-----------|
| 78            | Journal of the ACM                                      | 1954-2001 | 1:1-48:2  |
| 79            | Journal of the American Society for Information Science | 1990-2001 | 41:1-52:9 |
| 80            | Journal of the Association for Information Systems      | 2000-2002 | 1:1-2:8   |
| 81            | Journal of Strategic Information Systems                | 1991-2001 | 1:1-10:4  |
| 82            | Knowledge and Information Systems                       | 1999-2001 | 1:1-3:4   |
| 83            | Logistics Information Management                        | 1991-2001 | 4:1-14:3  |
| 84            | Management Science                                      | 1988-2002 | 34:1-48:2 |
| 85            | MIS Quarterly   | 1985-2002 | 9:1-26:1  |
| 86            | Organization  | 1995-2001 | 2:1-8:2   |
| 87            | Organization Science                                    | 1992-2001 | 3:1-12:2  |
| 88            | Quarterly Journal of Electronic Commerce                | 2000-2000 | 1:1-1:2   |
| 89            | SIAM Journal on Computing                               | 1972-2001 | 1:2-31:1  |
| 90            | The Database for Advances in Information Systems        | 1969-2000 | 1:1-31:1  |
| 91            | VLDB Journal  | 1992-2001 | 1:1-10:4  |
| 92            | World Wide Web Journal                                  | 1998-2001 | 1:1-4:4   |

## APPENDIX II. CONCEPTUAL MODEL OF REPOSITORY DATABASE

In this appendix, we present a rudimentary Entity-Relationship (ER) diagram, and a brief description of the tables that currently make up the IS Bibliographic Repository. In some cases, table and attribute names were rewritten so that they correspond to entity and relationship names presented in the ER diagram and to maximize the reader's understanding of the design. For example, in the real database, the name of the Write table is Author, and the attribute 'title' in the article table is called 'article'. Certain attributes used by various modules in the repository for processing were also excluded from this appendix. Knowledge of such attributes is only valuable to the system's maintainer.

Figure A1. ISBIB E-R Diagram



**Abstract Lines:** [Code, Order, Line]- Abstracts are stored by line. A line is defined as any string terminated by a period (.), exclamation point (!) question mark (?) or carriage return (i.e., next paragraph). This overcomes a limitation of the ODBC standard whereby only lines of less than 255 characters can be passed to an application.

**Article:** [Code, Title, JournalCode, Volume, Issue, MonthCode, Year, StartPage, EndPage, NotOfficial]- Note that there is no explicit functional relationship between volume, issue, month and year and the table is therefore in 5NF. Some journals do not have volumes, or issues while other journals will publish multiple issues in the same month.

**DepartmentTypes:** [DepartmentCode, Name]- This table is a system table and is not reflected in the ER Diagram.

**Faculty:** [FacultyNo, Last, First, DepartmentCode, InstitutionCode, Website, DatePhD, PhDInstitution]- Department and University denote the department and university of the author at the present time.

**Institution:** [InstitutionCode, Name, Logo, IsUniversity]- The logo is the name or URL of a graphic file depicting the institution's logo. Institutions include not only universities, but also publishers (e.g., ACM, IEEE, AIS).

**Journal:** [JournalCode, Title, InstitutionCode]

**Keywords:** [Keyword]- This table defines the list of acceptable keywords.

**Modifications:** [TableName, PrimaryKey, Attribute, ChangeType, RequestedBy, RequestDate, ChangeValue, Flag]- This table stores any and all requested modifications. ChangeType can either be addition, update, or deletion. If the primary key and the attribute field are the same, then the change request is for an entire record. Note that the primary key and attribute fields can store more than one attribute. If multiple attributes are stored, they are separated in the field by a comma.

**Month:** [MonthCode, MonthName]- Including 'Unknown', we have identified 37 distinct month codes used in journals. These include the traditional calendar months (e.g., 'January'), seasons (e.g., 'Spring'), and various combinations thereof (e.g., 'January/March').

**Rates:** [JournalCode, InstitutionCode, Rating]- This enables the repository to capture the ratings of the journals in each institution.

**SearchedBy:** [Code, Keyword]

**Website:** [Code, Website, Institution]- An article can be downloaded from more than one website. For example, the article could be stored in a digital library, and on the author's personal website.

**Writes:** [Code, FacultyNo, Order, DepartmentCode, InstitutionCode]- Order in this table denotes the author ordering. For example, in the cited paper by Benbasat and Weber [1996], Benbasat would be given an order of 1, while Weber would receive an order of 2. Department and University denote the department and university of the author at the time of publication.

## ABOUT THE AUTHORS

**Lan Cao** is a PhD student in Computer Information Systems at Georgia State University. She received a Masters of Science in Computer Information Systems from Georgia State University, and a Master of Science in textiles from the Georgia Institute of Technology. Her research interests include information system development, workflow management, and coordination theory.

**Cecil Eng Huang Chua** is a PhD student at Georgia State University. In 1995 he received both a Bachelor of Business Administration in Computer Information Systems and Economics and a Masters Certificate in Telecommunications Management from the University of Miami. He received a Masters of Business by Research from Nanyang Technological University in 2000. His research interests include methods for the representation, application, and reuse of knowledge. His research is published in journals such as *Data and Knowledge Engineering*, *Decision Support Systems*, and the *Journal of Database Management*.

**Karlene Cousins** is a doctoral student in the Department of Computer Information Systems at Georgia State University. Her research interests are in virtual teams, ubiquitous computing and mobile commerce. She received her bachelor's and master's degrees in

Management Information Systems from the University of the West Indies in Kingston Jamaica. Karlene is the Managing Editor of Information and Organization.

**Kannan Mohan** is a doctoral candidate in the Department of Computer Information Systems at Georgia State University. His research focuses on providing knowledge-based support for the design and development of product families, and managing variability in product families. His research interests include providing traceability support for knowledge-intensive processes, supporting the use of design patterns, developing and applying ontologies, and lightweight software development methodologies.

**Detmar W. Straub Jr.** is the J. Mack Robinson Distinguished Professor of Information Systems at Georgia State University, Detmar conducts research in net-enhanced organizations and e-Commerce, computer security, technological innovation, and international IT studies. He holds a DBA (MIS; Indiana) and a PhD (English; Penn State). He published over 90 papers in journals such as *CAIS*, *J AIS*, *Management Science*, *Information Systems Research*, *MIS Quarterly*, *Organization Science*, *CACM*, *JMIS*, *Journal of Global Information Management*, *Information & Management*, *Academy of Management Executive*, and *Sloan Management Review*. He is currently an Associate Editor for *Management Science* and *Information Systems Research*. Former Co-Editor of *DATA BASE for Advances in Information Systems* and an Associate Editor and Associate Publisher for *MIS Quarterly*, he consults widely in industry in the computer security area and in technological innovation. He teaches courses at GSU in electronic commerce strategy, IT strategies for management, IT outsourcing, international IT, and computer security management.

**Vijay K. Vaishnavi** is Professor in the Department of Computer Information Systems at Georgia State University. He conducts research in software development, including inter-organizational systems, formal/informal software specifications, object modeling and design, and efficient data structures. The National Science Foundation and private organizations including IBM, Nortel, and AT&T have supported his research. His research appears in such journals as *IEEE Transactions on Software Engineering*, *IEEE Transactions on Knowledge and Data Engineering*, *IEEE Transactions on Computers*, *SIAM Journal on Computing*, *Journal of Algorithms*, *Journal of Computer and System Sciences*, *Computer Graphics and Image Processing*, *Acta Informatica*, and *Communications of the ACM*. He is an author of the book, *Object Technology Centers of Excellence*, with Timothy D. Korson (Manning Publications/Prentice-Hall). Dr. Vaishnavi is an IEEE Fellow.

## LETTER TO THE EDITOR

January 2003

### IS BIBLIOGRAPHIC REPOSITORY: REVISED APPENDIX I

**Cecil Eng Huang Chua**

*Nanyang Technological University and Georgia State University*  
[AEHChua@ntu.edu.sg](mailto:AEHChua@ntu.edu.sg)

The IS Bibliographic Repository (ISBIB) was updated as of December 2002. In Appendix I of the original publication, we identified 82 journals for which bibliographic information had been

archived. The IS Bibliographic Repository now archives bibliographic information on 112 journals of relevance to the IS community. Enclosed at the end of this letter is the revised Appendix I.

The IS Bibliographic Repository stores bibliographic information on journals of relevance to the IS research community. It was developed to foster community building and understanding within the community by presenting the research published by the various sub-communities. The repository is available free of charge at <http://readable.eci.gsu.edu:8080/examples/servlet/isbib>.

In the spirit of community building, researchers and editors of journals are requested to contribute bibliographic information. We especially encourage the identification of journals not currently in the list. However, we also solicit corrections/updates to existing journals. While EndNote or BibTeX are the preferred formats for submission, information to be included can be submitted in any standardized format (e.g., ASCII text in APA format). Corrections to entries in the repository can be made via the various "modify record" options in the repository. Alternately, requests can be submitted to the active maintainer at [aeHchua@ntu.edu.sg](mailto:aeHchua@ntu.edu.sg). The maintainers do not impose personal value judgements on the "relevance" of journals included. So long as some sub-community of the IS community feels that a journal is relevant, we will include it.

More information on the IS Bibliographic Repository can be found in the article cited below. We request that researchers who employ the repository as data (e.g., bibliometric studies) cite this article.

Cecil Eng Huang Chua, Lan Cao, Karlene Cousins, Kannan Mohan, Detmar W. Straub Jr. and Vijay Vaishnavi. *IS Bibliographic Repository (ISBIB): A Central Repository of Research Information for the IS Community*. Communications of the AIS. 8(27) May 2002. pp. 392-412.

| S/No | Title   | Years     | Issues    |
|------|---|-----------|-----------|
| 1    | Accounting, Management, and Information Technologies/Information and Organization                       | 1991-2002 | 1:1-12:4  |
| 2    | Academy of Management Journal   | 1986-2002 | 29:1-45:5 |
| 3    | Academy of Management Review  | 1986-2002 | 11:1-27:4 |
| 4    | ACM Computing Surveys   | 1969-2002 | 1:1-34:4  |
| 5    | ACM Letters on Programming Languages and Systems/ ACM Transactions on Programming Languages and Systems | 1979-2002 | 1:1-24:5  |
| 6    | ACM Transactions on Asian Language Information Processing   | 2002-2002 | 1:1-1:2   |
| 7    | ACM Transactions on Computational Logic   | 2000-2002 | 1:1-3:4   |
| 8    | ACM Transactions on Computer Systems  | 1983-2002 | 1:1-20:4  |
| 9    | ACM Transactions on Computer-Human Interaction  | 1994-2002 | 1:1-9:4   |
| 10   | ACM Transactions on Database Systems  | 1976-2002 | 1:1-27:4  |
| 11   | ACM Transactions on Design Automation of Electronic Systems   | 1996-2002 | 1:1-7:4   |
| 12   | ACM Transactions on Graphics  | 1982-2002 | 1:1-21:4  |
| 13   | ACM Transactions on Information and System Security   | 1998-2002 | 1:1-5:4   |

IS Bibliographic Repository (ISBIB): A Central Repository of Research Information for the IS Community by C. Chua, L. Cao, K. Cousins, K. Mohan, D. Straub, and V. Vaishnavi



| S/No | Title   | Years     | Issues              |
|------|---|-----------|---------------------|
| 14   | ACM Transactions on Information Systems/<br>ACM Transactions on Office Information<br>Systems | 1983-2002 | 1:1-20:4            |
| 15   | ACM Transactions on Internet Technologies   | 2001-2002 | 1:1-2:3             |
| 16   | ACM Transactions on Mathematical<br>Software  | 1975-2002 | 1:1-28:4            |
| 17   | ACM Transactions on Modeling and<br>Computer Simulation                                       | 1991-2002 | 1:1-12:2            |
| 18   | ACM Transactions on Software Engineering<br>and Methodology                                   | 1992-2002 | 1:1-11:3            |
| 19   | Acta Informatica  | 1971-2002 | 1:1-38:9            |
| 20   | AI Magazine   | 1980-2002 | 1:1-23:4            |
| 21   | Annals of Cases on Information Technology   | 1999-2002 | 1-4                 |
| 22   | Artificial Intelligence   | 1983-2002 | 21:1-139:1          |
| 23   | BIT   | 1980-1993 | 20:1-33:4           |
| 24   | Business Process Management Journal   | 1995-2002 | 1:1-8:5             |
| 25   | Communications of the ACM   | 1971-2002 | 14:1-45:12          |
| 26   | Communications of the Association for<br>Information Systems                                  | 1999-2002 | 1:1-9:5             |
| 27   | Data and Knowledge Engineering  | 1986-2002 | 1:1-43:3            |
| 28   | Decision Sciences   | 1996-2002 | 27:2-33:3           |
| 29   | Decision Support Systems  | 1994-2003 | 12:2-35:1           |
| 30   | E-Services Journal  | 2001-2002 | 1:1-1:3             |
| 31   | Electronic Journal of Business Research<br>Methods  | 2002-2002 | 1:1-1:1             |
| 32   | Electronic Journal on Information Systems in<br>Developing Countries                          | 2000-2002 | 1:1-9:1             |
| 33   | Electronic Markets  | 1991-2002 | 1:2-12:4            |
| 34   | European Journal of Information Systems   | 1995-2002 | 4:1-11:4            |
| 35   | Group Decision and Negotiation  | 1995-2002 | 4:1-11:6            |
| 36   | Harvard Business Review   | 1990-2002 | 68:1-80:9           |
| 37   | IEEE Annals of the History of Computing   | 1996-2002 | 18:1-24:4           |
| 38   | IEEE Computer   | 1974-2002 | 7:1-35:12           |
| 39   | IEEE Computer Graphics and Applications   | 1981-2003 | 1:1-23:1            |
| 40   | IEEE Computer Science and<br>Engineering/IEEE Computing in Science<br>and Engineering         | 1994-2002 | 1:1-5:4/1:1-<br>5:1 |

| S/No | Title   | Years     | Issues    |
|------|---|-----------|-----------|
| 41   | EEE Concurrency   | 1997-2000 | 5:1-8:3   |
| 42   | EEE Intelligent Systems                                 | 1988-2002 | 1:1-17:6  |
| 43   | EEE Internet Computing                                  | 1997-2002 | 1:1-6:6   |
| 44   | EEE Micro   | 1981-2002 | 1:1-22:6  |
| 45   | EEE Parallel and Distributed Technology                 | 1993-1996 | 1:1-4:4   |
| 46   | EEE Pervasive Computing                                 | 2002-2002 | 1:1-1:4   |
| 47   | EEE Software  | 1984-2003 | 1:1-20:1  |
| 48   | EEE Transactions on Computers                           | 1975-2002 | 24:1-51:9 |
| 49   | EEE Transactions on Engineering Management              | 1986-2002 | 33:1-49:3 |
| 50   | EEE Transactions on Evolutionary Computation            | 1997-2002 | 1:1-6:6   |
| 51   | EEE Transactions on Fuzzy Systems                       | 1993-2002 | 1:1-10:6  |
| 52   | EEE Transactions on Knowledge and Data Engineering      | 1989-2002 | 1:1-14:5  |
| 53   | EEE Transactions on Neural Networks                     | 1990-2002 | 1:1-13:6  |
| 54   | EEE transactions on parallel and distributed systems    | 1990-2002 | 1:1-13:9  |
| 55   | EEE Transactions on Pattern and Machine Intelligence    | 1991-2002 | 13:1-24:9 |
| 56   | EEE Transactions on Mobile Computing                    | 2002-2002 | 1:1-1:3   |
| 57   | EEE Transactions on Software Engineering                | 1975-2002 | 1:1-28:10 |
| 58   | EEE Transactions on Visualization and Computer Graphics | 1995-2002 | 1:1-8:4   |
| 59   | EEE/ACM Transactions on Networking                      | 1993-2002 | 1:1-10:5  |
| 60   | Information and Management                              | 1995-2002 | 28:1-40:2 |
| 61   | Information Management                                  | 2000-2001 | 13:3-13:4 |
| 62   | Information Resources Management Journal                | 2001-2003 | 14:1-16:1 |
| 63   | Information Society                                     | 1981-2002 | 1:1-18:5  |
| 64   | Information Systems                                     | 1975-2002 | 1:1-27:6  |
| 65   | Information Systems Frontiers                           | 1999-2002 | 1:1-4:4   |
| 66   | Information Systems Journal                             | 1995-2003 | 5:1-13:1  |
| 67   | Information Systems Research                            | 1990-2002 | 1:1-13:4  |
| 68   | Information Technology and Management                   | 2000-2002 | 1:1-3:4   |
| 69   | Information Technology and People                       | 1993-2002 | 6:2-15:4  |

| S/No | Title  | Years     | Issues     |
|------|--|-----------|------------|
| 70   | Information Technology, Learning, and Performance Journal/Office Systems Research Journal    | 1999-2002 | 17:1-20:1  |
| 71   | Informing Science  | 1998-2002 | 1:1-5:4    |
| 72   | International Journal of Electronic Commerce   | 1996-2002 | 1:1-7:1    |
| 73   | International Journal of Human Computer Interaction  | 1989-2002 | 1:1-14:3/4 |
| 74   | International Journal of Man-Machine Studies/International Journal of Human Computer Studies | 1982-2002 | 16:1-57:6  |
| 75   | IT and Society   | 2002-2002 | 1:1-1:1    |
| 76   | Journal of Algorithms  | 1980-2002 | 1:1-43:2   |
| 77   | Journal of Computer and System Science   | 1990-2002 | 40:1-64:3  |
| 78   | Journal of Database Management   | 1990-2002 | 1:1-14:1   |
| 79   | Journal of Educational Resources in Computing  | 2001-2002 | 1:1-2:1    |
| 80   | Journal of Electronic Commerce Research  | 2000-2002 | 1:1-3:4    |
| 81   | Journal of End User Computing  | 1989-2002 | 1:1-15:1   |
| 82   | Journal of Experimental Algorithmics   | 1996-2002 | 1:1-7:1    |
| 83   | Journal of Global Information Management   | 1993-2003 | 1:2-11:1   |
| 84   | Journal of Global Information Technology and Management                                      | 1998-2002 | 1:1-5:4    |
| 85   | Journal of Information Technology  | 1993-2002 | 8:1-17:2   |
| 86   | Journal of Information Technology Cases and Applications                                     | 1999-2002 | 1:1-4:4    |
| 87   | Journal of Information Technology Education  | 2002-2002 | 1:1-1:3    |
| 88   | Journal of Information Technology Theory and Application                                     | 1999-2002 | 1:1-4:3    |
| 89   | Journal of Information Warfare   | 2001-2002 | 1:1-2:1    |
| 90   | Journal of IT Standards Research   | 2003-2003 | 1:1-1:1    |
| 91   | Journal of Management Information Systems  | 1984-2002 | 1:1-19:1   |
| 92   | Journal of Strategic Information Systems   | 1995-2002 | 4:1-11:3/4 |
| 93   | Journal of the ACM   | 1954-2002 | 1:1-49:5   |
| 94   | Journal of the American Society for Information Science                                      | 1990-2002 | 41:1-53:11 |
| 95   | Journal of the Association for Information Systems   | 2000-2002 | 1:1-3:5    |

| S/No | Title   | Years     | Issues     |
|------|---|-----------|------------|
| 96   | Journal of Media Management                                     | 1999-2002 | 1:1-4:3    |
| 97   | Journal of Organizational Computing and Electronic Commerce     | 1997-2002 | 7:1-12:4   |
| 98   | The Journal of Systems and Information Technology               | 1997-2002 | 1:1-6:1    |
| 99   | Knowledge and Information Systems                               | 1999-2002 | 1:1-4:4    |
| 100  | Logistics Information Management                                | 1991-2002 | 4:1-15:5/6 |
| 101  | Management Science  | 1988-2002 | 34:1-48:9  |
| 102  | MIS Quarterly   | 1985-2002 | 9:1-26:4   |
| 103  | MISQ Executive  | 2002-2002 | 1:1-1:2    |
| 104  | Organization  | 1995-2002 | 2:1-9:4    |
| 105  | Organization Science  | 1992-2002 | 3:1-13:6   |
| 106  | Quarterly Journal of Electronic Commerce                        | 2000-2000 | 1:1-1:2    |
| 107  | SIAM Journal on Computing                                       | 1972-2002 | 1:2-32:1   |
| 108  | Sloan Management Review   | 1990-2002 | 31:2-43:4  |
| 109  | Springer International Journal on Software and Systems Modeling | 2002-2002 | 1:1-1:2    |
| 110  | The Database for Advances in Information Systems                | 1969-2002 | 1:1-33:4   |
| 111  | VLDB Journal  | 1992-2002 | 1:1-11:2   |
| 112  | World Wide Web Journal  | 1998-2002 | 1:1-5:4    |

Copyright © 2002 by the Association for Information Systems. Permission to make digital or hard copies of all or part of this work for personal or classroom use is granted without fee provided that copies are not made or distributed for profit or commercial advantage and that copies bear this notice and full citation on the first page. Copyright for components of this work owned by others than the Association for Information Systems must be honored. Abstracting with credit is permitted. To copy otherwise, to republish, to post on servers, or to redistribute to lists requires prior specific permission and/or fee. Request permission to publish from: AIS Administrative Office, P.O. Box 2712 Atlanta, GA, 30301-2712 Attn: Reprints or via e-mail from [ais@gsu.edu](mailto:ais@gsu.edu).



# Communications of the Association for Information Systems

ISSN: 1529-3181

## EDITOR-IN-CHIEF

Paul Gray  
Claremont Graduate University

## AIS SENIOR EDITORIAL BOARD

|   |  |   |
|---|--|---|
| Cynthia Beath<br>Vice President Publications<br>University of Texas at Austin | Paul Gray<br>Editor, CAIS<br>Claremont Graduate University             | Sirkka Jarvenpaa<br>Editor, JAIS<br>University of Texas at Austin |
| Edward A. Stohr<br>Editor-at-Large<br>Stevens Inst. of Technology             | Blake Ives<br>Editor, Electronic Publications<br>University of Houston | Reagan Ramsower<br>Editor, ISWorld Net<br>Baylor University       |

## CAIS ADVISORY BOARD

|   |  |  |
|---|--|--|
| Gordon Davis<br>University of Minnesota | Ken Kraemer<br>Univ. of California at Irvine | Richard Mason<br>Southern Methodist University |
| Jay Nunamaker<br>University of Arizona  | Henk Sol<br>Delft University                 | Ralph Sprague<br>University of Hawaii          |

## CAIS EDITORIAL BOARD

|  |   |  |   |
|--|---|--|---|
| Steve Alter<br>U. of San Francisco                   | Tung Bui<br>University of Hawaii                        | H. Michael Chung<br>California State Univ.       | Donna Dufner<br>U. of Nebraska -Omaha                   |
| Omar El Sawy<br>University of Southern<br>California | Ali Farhoomand<br>The University of Hong<br>Kong, China | Jane Fedorowicz<br>Bentley College               | Brent Gallupe<br>Queens University, Canada              |
| Robert L. Glass<br>Computing Trends                  | Sy Goodman<br>Georgia Institute of<br>Technology        | Joze Gricar<br>University of Maribor<br>Slovenia | Ruth Guthrie<br>California State Univ.                  |
| Chris Holland<br>Manchester Business<br>School, UK   | Juhani Iivari<br>University of Oulu<br>Finland          | Jaak Jurison<br>Fordham University               | Jerry Luftman<br>Stevens Institute of<br>Technology     |
| Munir Mandviwalla<br>Temple University               | M. Lynne Markus<br>Bentley College                      | Don McCubbrey<br>University of Denver            | Michael Myers<br>University of Auckland,<br>New Zealand |
| Seev Neumann<br>Tel Aviv University, Israel          | Hung Kook Park<br>Sangmyung University,<br>Korea        | Dan Power<br>University of Northern<br>Iowa      | Maung Sein<br>Agder University College,<br>Norway       |
| Peter Seddon<br>University of Melbourne<br>Australia | Doug Vogel<br>City University of Hong<br>Kong, China    | Hugh Watson<br>University of Georgia             | Rolf Wigand<br>Syracuse University                      |

## ADMINISTRATIVE PERSONNEL

|   |  |   |
|---|--|---|
| Eph McLean<br>AIS, Executive Director<br>Georgia State University | Samantha Spears<br>Subscriptions Manager<br>Georgia State University | Reagan Ramsower<br>Publisher, CAIS<br>Baylor University |
|---|--|---|